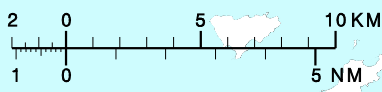
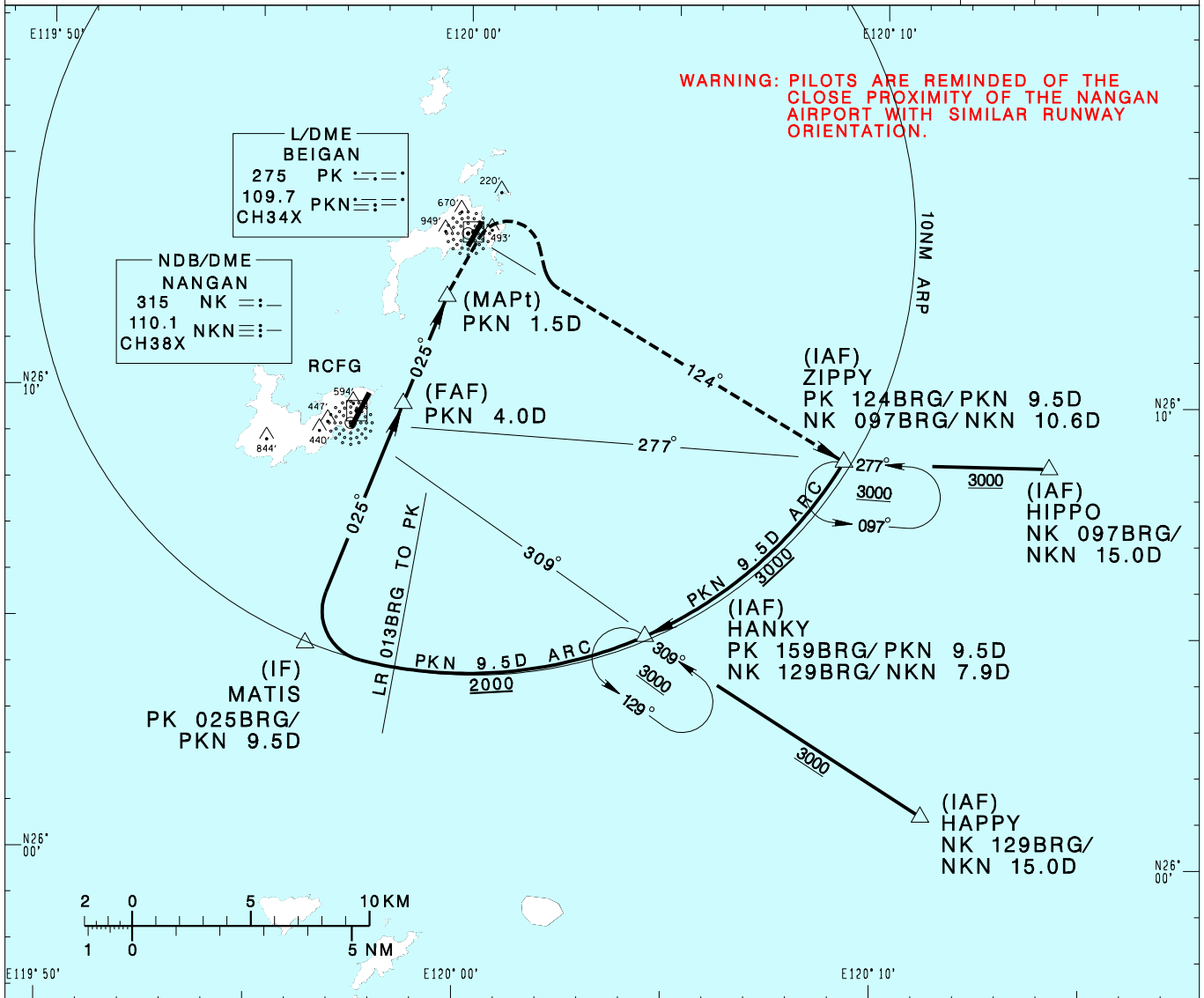


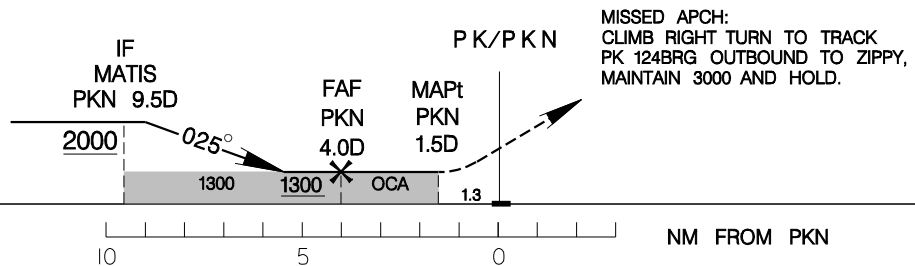
**馬祖/北竿機場**  
MATSU/BEIGAN AD

RCMT  
NDB RWY03

TAIPEI APP 121.0 122.3	BEIGAN TWR 118.65	ATIS 127.35	VAR 5° W 
Apt Elev: 41'	Rwy03 THR Elev: 26'	Trans Level: FL130	
BEARINGS ARE MAGNETIC; DISTANCES ARE NAUTICAL MILES; ELEVATIONS, HEIGHTS IN FEET			



NO CDFA



CHANGES: NEW PAGE NUMBER

MINIMA (OCA IN FT, VIS IN M, OCH IN FT)			NOTE 1. CAUTION HIGH TERRAIN NEAR THE AIRPORT. 2. CIRCLING NA NORTHWEST OF AIRPORT. 3. CIRCLING TO RWY 21 NA AT NIGHT. 4. THE FINAL APCH COURSE OFFSETS FROM RWY CENTERLINE EXTENSION BY 7 DEG, AND INTERSECTS AT 0.82NM FROM THR03. *DME REQUIRED.
CATEGORY	A	B	
STRAIGHT-IN	1300/3200	1274	
CIRCLING	1300/3600	1259	